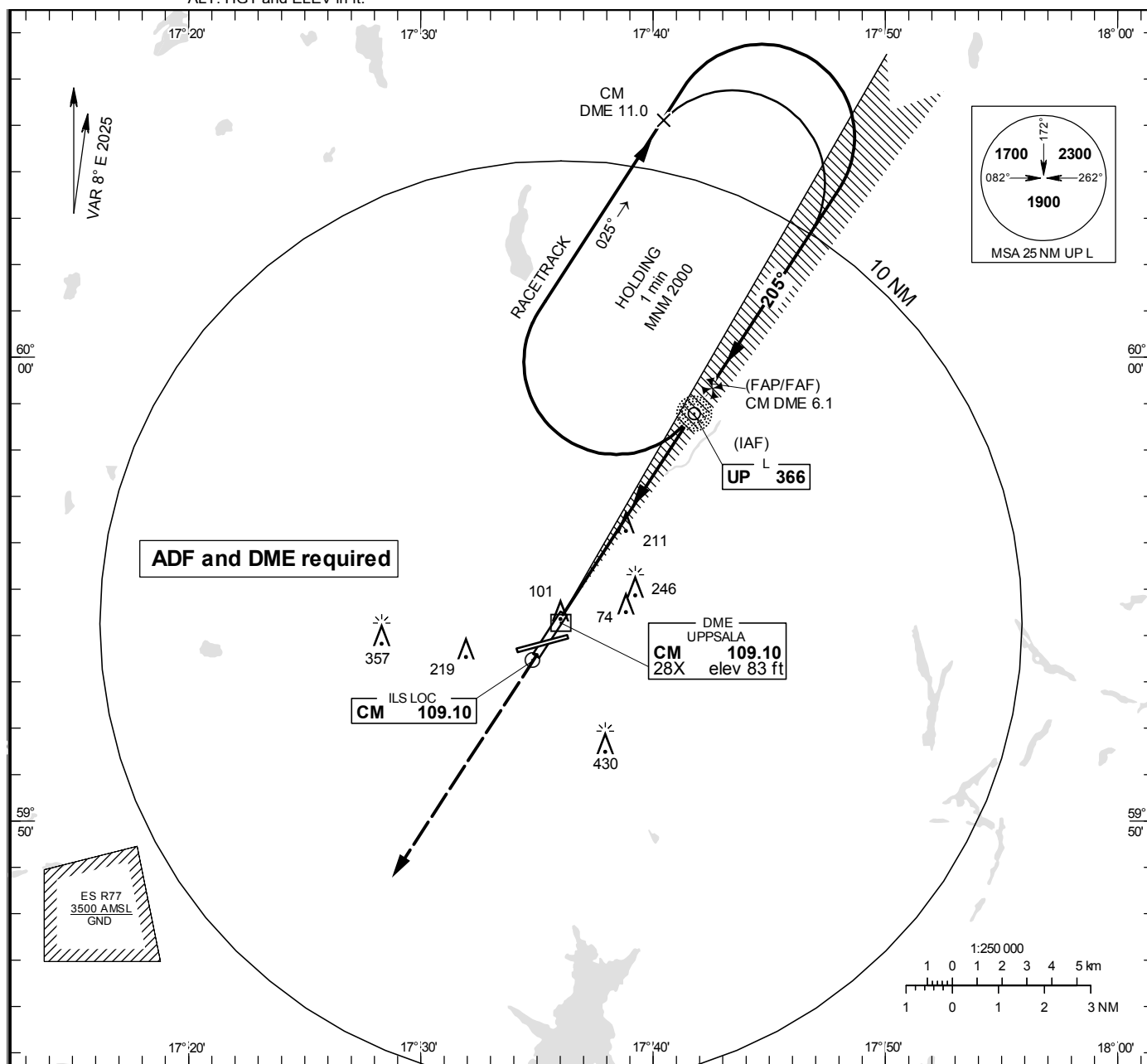


INSTRUMENT  
APPROACH  
CHART – ICAO

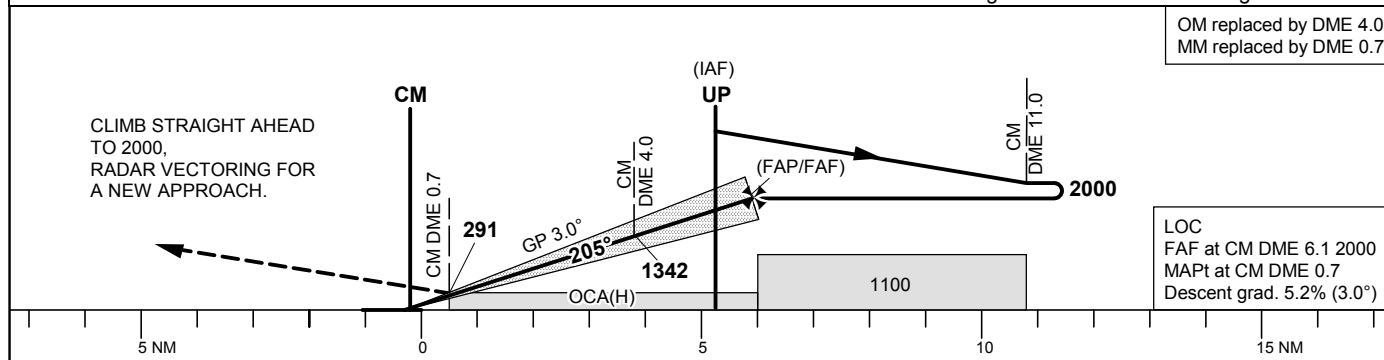
THR ELEV 68.0 ft, AD ELEV 69 ft

OCH are related to THR.  
Circling OCH are related to AD ELEV.  
BRG are MAG  
ALT, HGT and ELEV in ft.UPPSALA TOWER 119.200  
UPPSALA APPROACH 130.400

TA 5000 ft AMSL

RDH 54.5

\*Timing not authorized for defining the MAPt



| OCA (H)              |           |           |           |           | Final approach LOC Distance FAF-MAPt 5.4 NM* |        |      |      |      |      |
|----------------------|-----------|-----------|-----------|-----------|--|--------|------|------|------|------|
| Cat of ACFT          | A         | B         | C         | D         | DME CM NM                                    | 2      | 3    | 4    | 5    | 6    |
| Straight-in Approach | 210 (142) | 219 (151) | 229 (161) | 239 (171) | ALT  | 710    | 1020 | 1340 | 1660 | 1980 |
| Circling             | 550 (490) | 730 (670) | 830 (770) | 830 (770) | Time   | min:s  | 4:02 | 3:13 | 2:41 | 2:18 |
| Circling W RWY       | 520 (460) | 520 (460) | 760 (700) | 760 (700) | Rate of descent                              | ft/min | 425  | 530  | 635  | 745  |

CHANGE: Editorial.